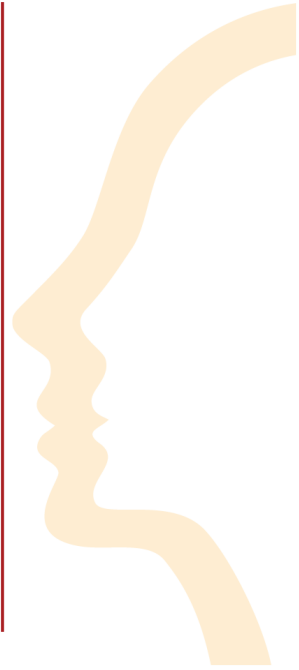




Brain Injury Related Services

VOCATIONAL REHABILITATION



WHO

Vocational Rehabilitation (VR) is a program that helps people that have a disability prepare for, gain, keep, or advance in a job. They work with community partners and businesses to develop job opportunities.

Eligibility: Any person that has a disability (physical or mental impairment) that makes it difficult to find or keep a job, needs VR services to overcome barriers and wants to work. Medical or psychological documentation of a disability is used to determine eligibility.

WHAT

- Vocational Rehabilitation Counselor (VRC) helps participants explore their interests, abilities, and goals, creating an Individualized Plan for Employment (IPE) to guide them toward employment.
- Career Assessment Specialist (CAS) conducts assessments to help participants explore their interests and abilities related to employment and provides recommendations for further career exploration, reporting results to the VRC.
- Rehab Tech offers administrative and rehabilitation support to vocational rehabilitation professionals, including conducting intake interviews with new participants.
- Business Service Specialist (BSS) builds long-term relationships with businesses to create solutions that promote the employment and retention of individuals with disabilities and assists VRCs with labor market information and employment trends.
- Vision Rehabilitation Specialist (VRS) provides vision rehabilitation services to participants with visual impairments in various settings, including homes, schools, and businesses.

VR may provide the following services, if it is related to the disability or employment goal:

WHEN

- Diagnosis and evaluation
- Vocational counseling and planning
- Information and referral
- Assistive technology
- Physical and mental restoration services
- Transportation
- Job training including supported employment
- Job placement and follow-up

Vocational Rehabilitation services can be beneficial at any time through the brain injury recovery process.

VR Process:

- 1. Apply for Services:** Submit an application, provide information about disability and employment needs. VR will schedule an initial interview.
- 2. Eligibility:** The individual must,
 - Have a documented disability.
 - The disability must impact their ability to find, keep or advance in employment.
 - Require VR services to help them overcome barriers to employment.
- 3. Assessment:** The VRC works with the participant to assess their strengths, skills, abilities, capabilities, and interests, as well as the support needed to achieve their employment goals. This may include assessments, job shadows, or interviews.
- 4. Services/Plan:** An IPE is created that outlines the specific services and support the participant will receive, such as training, job search assistance, or accommodations to help them find, keep, or advance in a job.
- 5. Follow-Up – Until Successfully Employed:** The VRC provides ongoing support, monitoring progress, and offering additional services if needed to ensure the participant successfully gains and maintains employment. The case remains open until the participant is stable in their job.

Get, maintain, or advance in your career. Return to work ASAP and with a job that matches your abilities, capabilities, and interests.

- VR provides a range of services tailored to an participant's disability and employment needs, focusing on promoting independence through natural supports through the employer, the use of technology when completing tasks, or identifying and providing reasonable accommodations at the worksite.
- If additional support is needed, the VRC may consider hiring a job coach to assist with job search and job coaching.
- VR services are time-limited, and the VRC ensures all necessary services are provided and the participant is stable in employment before closing the case.
- After closure, the VR office is always available for questions, and individuals can re-apply for services if needed.
- Most VR services are provided at no cost for eligible individuals.

To find a provider near you go to

[NDBIN's Resource Directory](#) or scan the QR code.



For More Information

(855) 866-1884 • info@ndbin.org • www.ndbin.org



**NORTH DAKOTA
BRAIN INJURY
NETWORK**